

# SIX POINTS APARTMENT HOMES



**MODERN LIVING WITH ALL THE AMENITIES YOU'RE LOOKING FOR  
AT A GREAT VALUE**

**6519 W. GREENFIELD AVENUE**

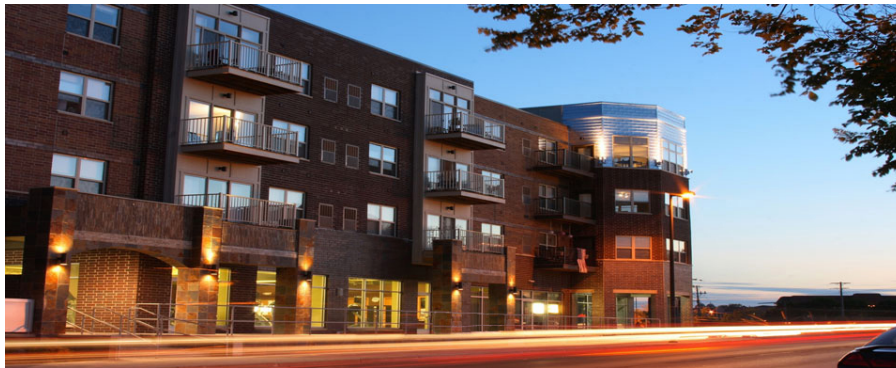
**( Minutes to I-94; 10 Minutes to Downtown Milwaukee and Brookfield)  
(15 Minutes to Menomonee Falls & Waukesha)**

Bordered by 65th & National Avenue & Greenfield Avenue & Six Points Crossing  
Six Points Apartments is approximately 1 mile South of I-94 West - Exit 307A or 307B.

**Call 414-332-5500 For Your Personal Showing  
View Apartments at: [www.trikepm.com](http://www.trikepm.com)**

**\$399**

**Security  
Deposit  
With Auto Pay**



**Underground  
Heated  
Garage  
Parking \$40**

Central A/C; Appliances; Dishwasher; Washer/Dryer in Unit; Heated Underground Parking Available; Fitness Center and Clubhouse. Spacious, Gorgeous 1 & 2 Bedroom Apartments; 675 - 1320 Sq. ft. with secure key fob entry system, Pets OK, some restrictions apply. Quiet & peaceful urban setting located just a short commute to the City of Milwaukee and the suburban cities of Wauwatosa, Greenfield, New Berlin, Brookfield, Waukesha and Menomonee Falls. West Allis is home to several major employers and attractions. Within walking distance from the SiXPoints property are the following retailers: Walgreens, Pick-N-Save, Office Depot, Joe's Coffee/Cafe as well as several quaint eateries and express food options. Near Miller Park, Zablocki VA Center and Miller Brewing Company. **Adjacent to the Fabulous & Local Farmer's Market.**

Unit Type	Unit Size	Rent Range
1 Bedroom	675 – 865 Sq. Ft.	\$ 979 - \$1099
1 Bedroom w/Den	880 – 999 Sq. Ft.	\$1099 - \$1149
2 Bedroom 1 Bath	990 – 1080 Sq. Ft.	\$1149 - \$1249
2 Bedroom 2 Bath	1080 – 1320 Sq. Ft.	\$1249 - \$1449



**F Bldg 1430 S. Six Points Crossing**  
**H Bldg 1460 S. Six Points Crossing**



**1 BED / 1 BATH - 675 sf**  
 UNITS 105 106



**1 BED / 1 BATH - 823 sf**  
 UNITS 205 305 405  
 206 306 406



**1 BED / 1 BATH / DEN - 880 sf**  
 UNITS 104 204 304 404  
 107 207 307 407

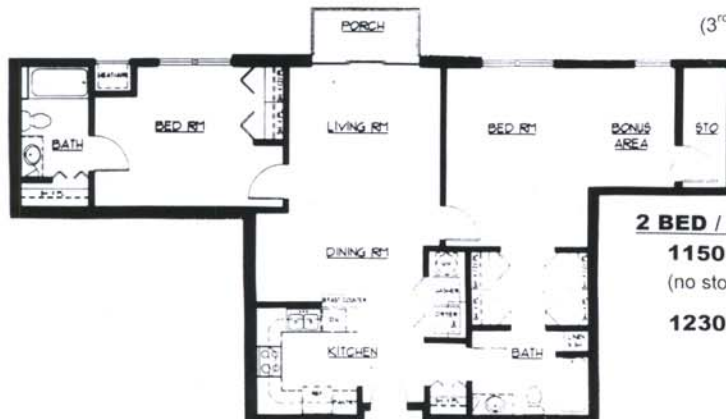


**2 BED / 1 BATH / BONUS - 1080 sf**  
 UNITS 101 110



**2 BED / 2 BATH - 1143 sf**  
 UNITS 102 202 302 402  
 103 203 303 403  
 108 208 308 408  
 109 209 309 409

(3<sup>rd</sup> & 4<sup>th</sup> Floor units – wrap around porch)



**2 BED / 2 BATH**  
**1150 sf** UNITS 201 210  
 (no storage)  
**1230 sf** UNITS 301 401  
 310 410



**1 BED / 1 BATH - 865sf**  
UNIT 106



**2 BED / 1 BATH - 1030sf**  
UNIT 104



**2 BED / 1 BATH - 990 & 1020sf**  
UNITS 105 205 305 405  
206 306 406  
207 307 407  
208 308 408



**2 BED / 2 BATH - 1150sf**  
UNITS 204 304 404  
209 309 409



**2 BED / 2 BATH - 1204sf**  
UNITS 101 201 301 401  
102 202 302 402  
211 311 411  
212 312 412

(1st Floor unit w/terrace)



**2 BED / 2 BATH**  
**1080sf 1289sf 1320sf**  
UNITS 103 210 203  
310 303  
410 403

(1st Floor unit- smaller Living Rm. w/terrace)

**AB Bldg**

~~XXXXXXXXXX.~~

**6501 W. Greenfield Avenue**



**G Bldg 1441 S. 65<sup>th</sup> Street**



**1 BED / 1 BATH - 675 sf**

UNITS 101  
114



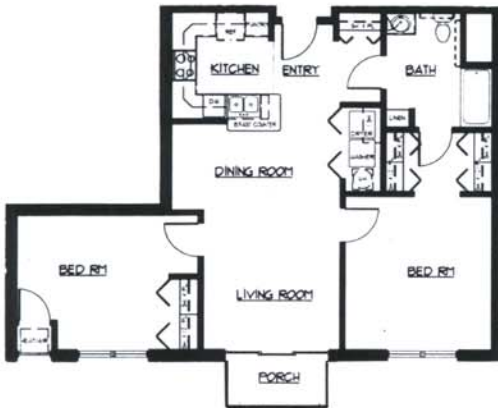
**1 BED / 1 BATH - 823sf, 920sf & 960sf**

1 Bed / 1 Bath	w/bonus	w/bonus & storage
103 201 301 401	208	308 408
108 203 303 403		
112 212 312 412		
214 314 414		

**1 BED/1 BATH/DEN  
880sf, 950sf & 1000sf**

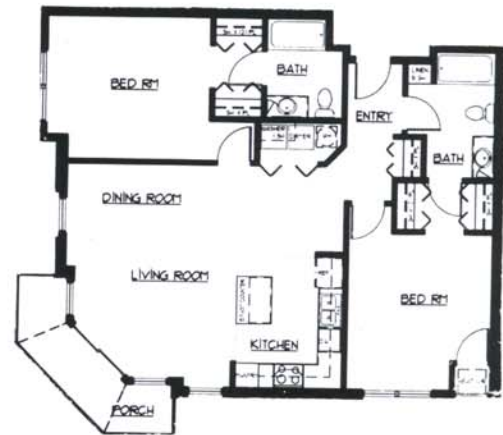
1 Bed / 1 Bath/Den  
102 202 302 402  
113 213 313 413

w/bonus	w/bonus & storage
107 207	307 407



**2 BED / 1 BATH - 1080 sf**

UNITS 106  
109



**2 BED / 2 BATH - 1143 sf**

UNITS	104	204	304	404
	105	205	305	405
	110	210	310	410
	111	211	311	411

(3<sup>rd</sup> & 4<sup>th</sup> Floor units – wrap around porch)



**2 BED / 2 BATH - 1100/1150 sf**

UNITS	206	306	406
	209	309	409